

“ ”

107

“ ”
“ 50 ”

2022 6 28

“ ”

101

”

2022
100

18

25

8 “ ”
34

5 5

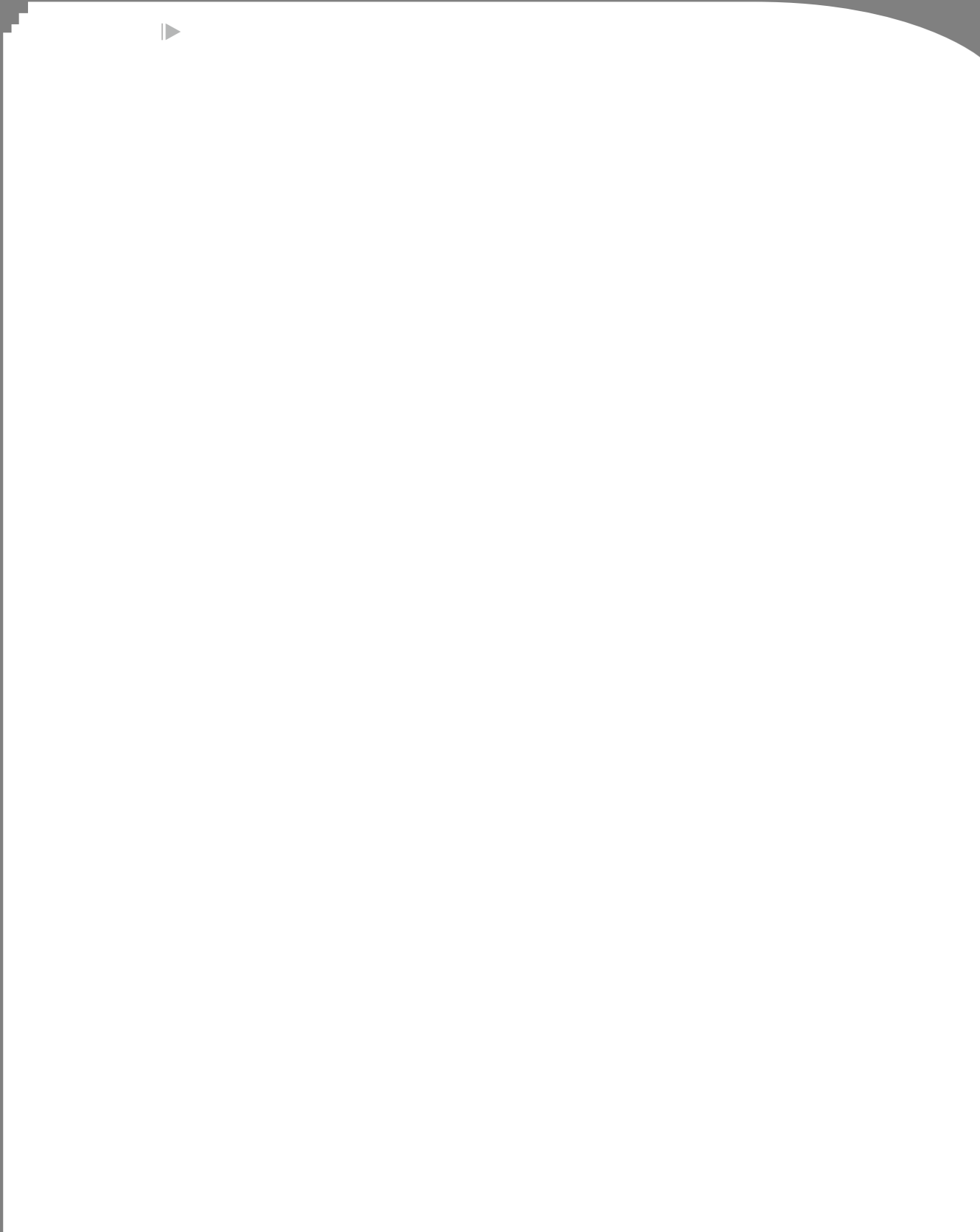
“ ” “ ”

“ ”

“ ”

-

6





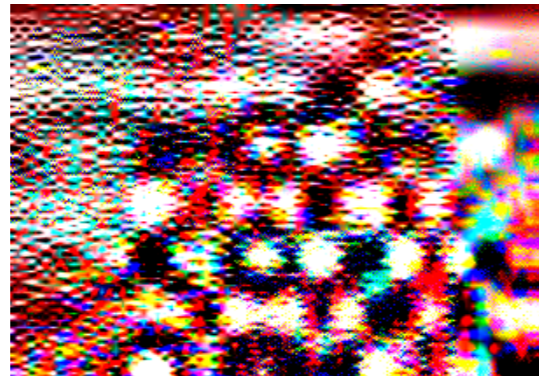
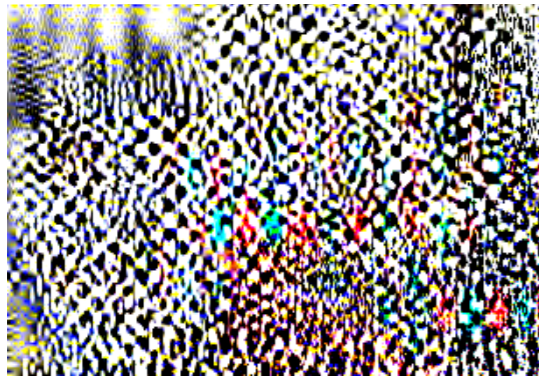
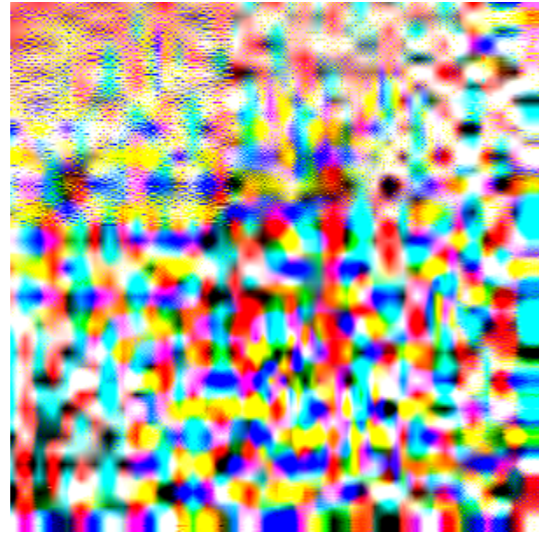
“ ” “ ”

“ ”

“ ”

— @

”



101

“ ”
“ ”

101

\$" #+



101

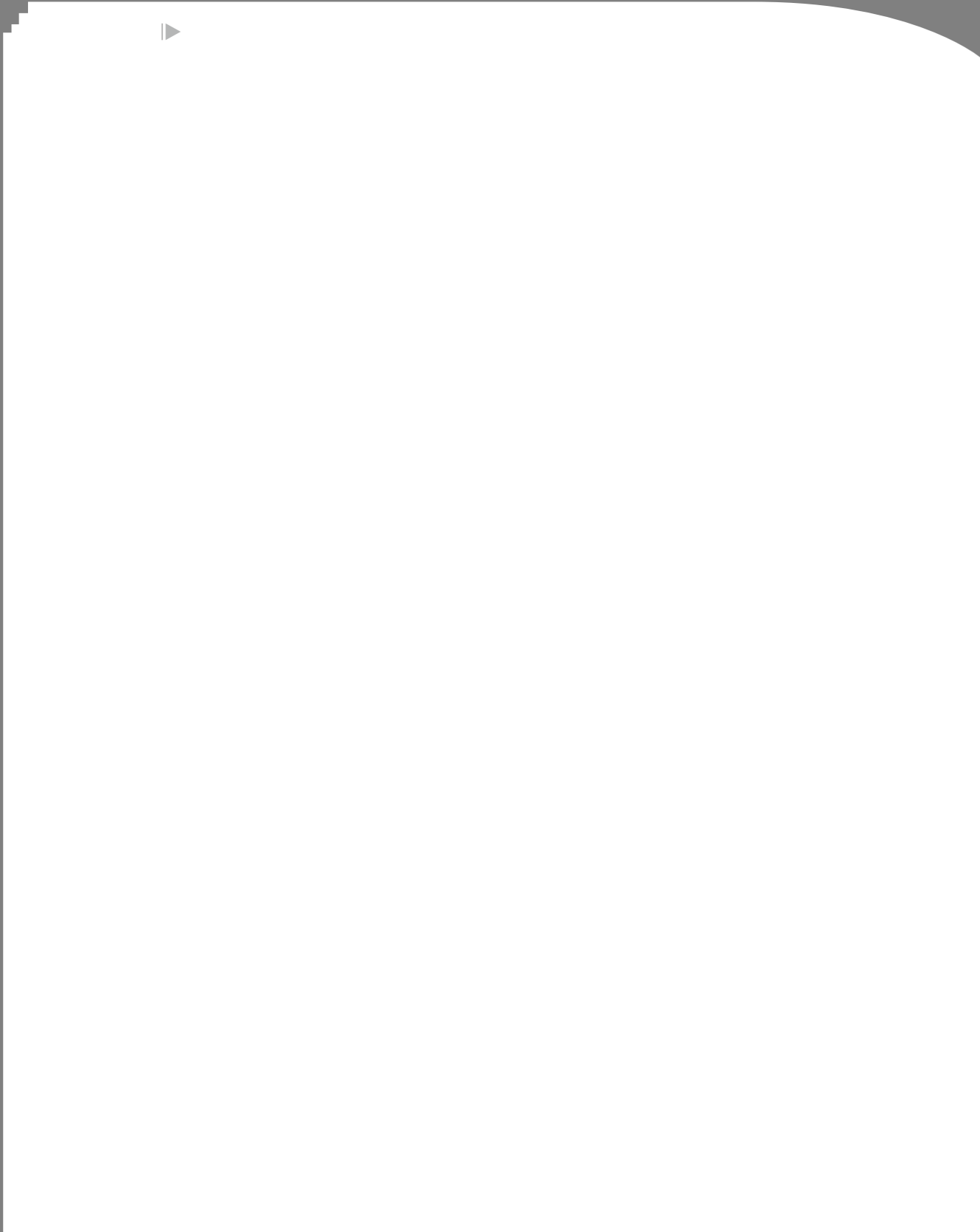
“ ”

“ ”

“ ”

È

È



11

9

13

15



5 18

.....

6

“ ” “ 1 4 7 ” “ 2 3 5
 6” “ 14” “ 14” “ ”
 “ ” “ ” “ ” “ ”
 ” “ ” “ ” “ ”
 ”

“ ” “ ”
 ”

“ ” “ ”

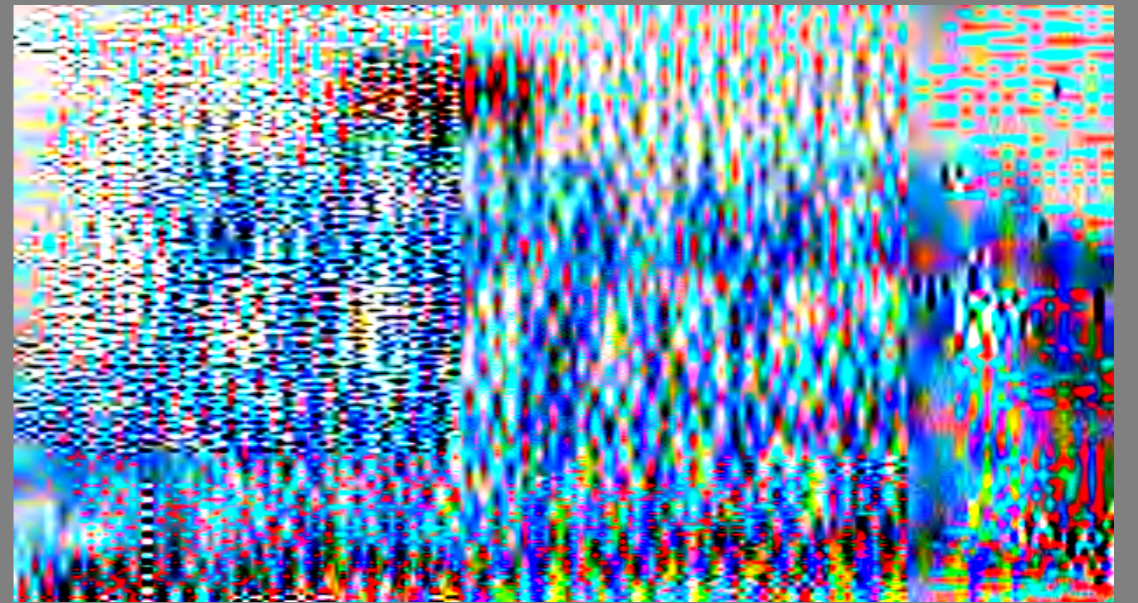
”

“ ” “ ” “ ” “ ”

5

“ ” “ ” “ ” “ ”
 6 ” “ ” “ ” “ ”
 ” “ ” “ ” “ ” “ ”
 7 ” 19

“ ” “ ”



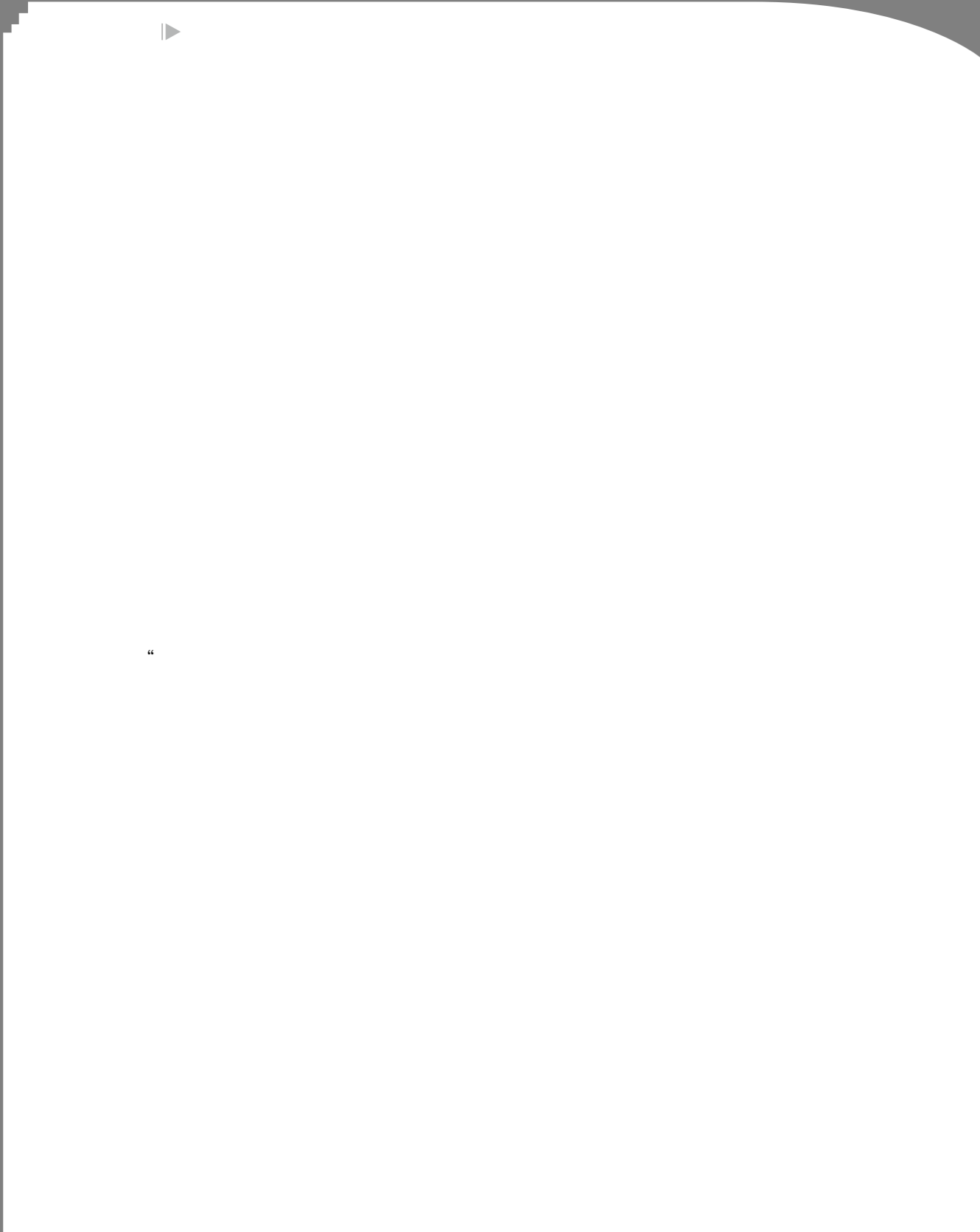
)

8

1

“ ”

5



5

5
787

787

” “

787



787

5

12

32

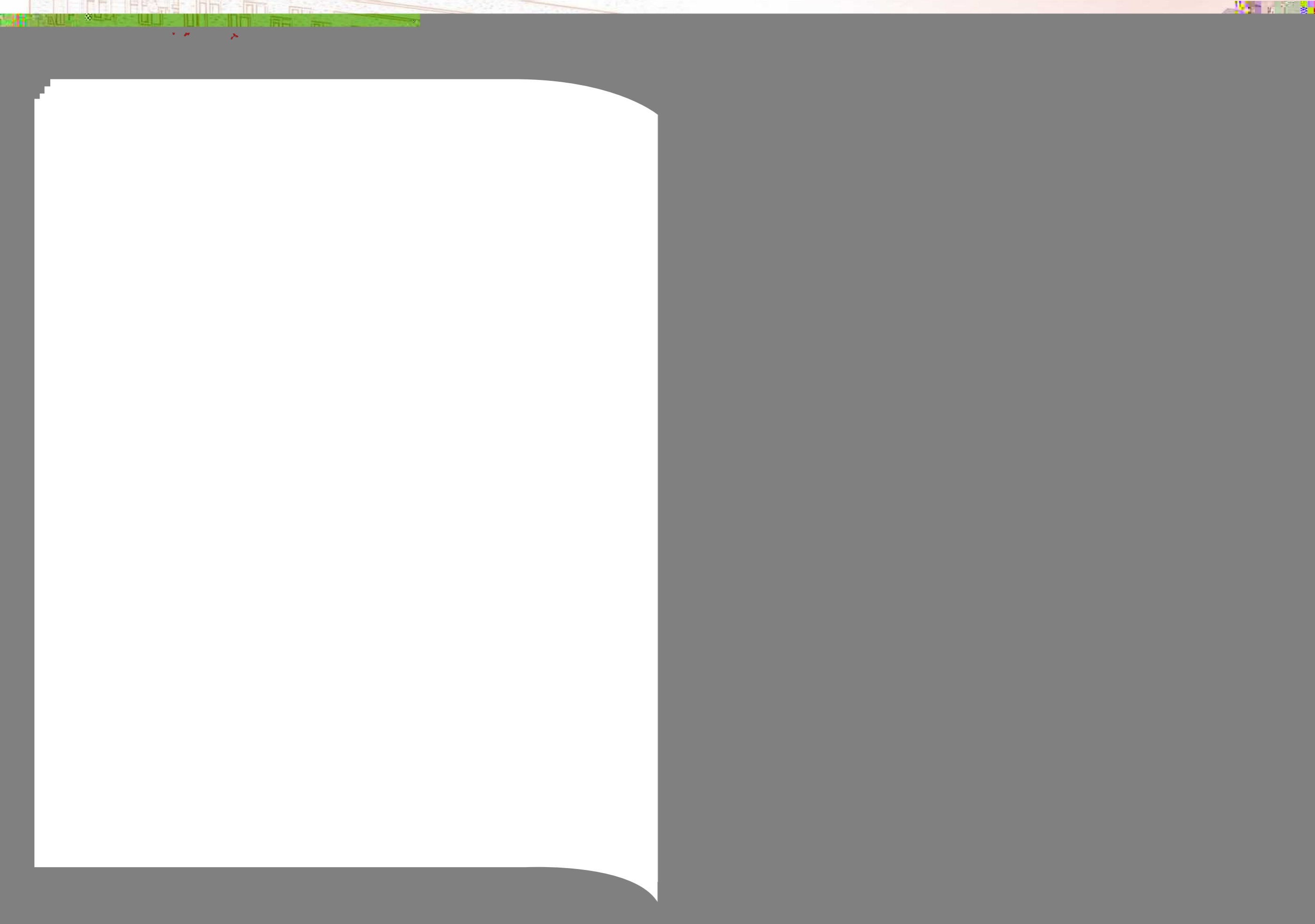
2000

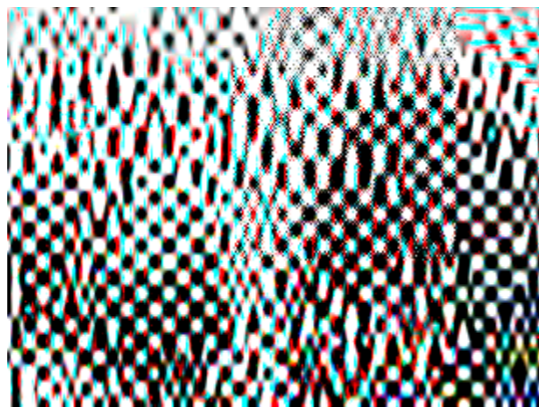
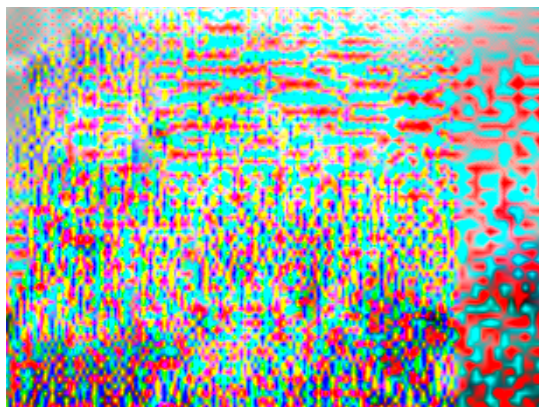
2015 4

2022 7
2000

2015 4 8







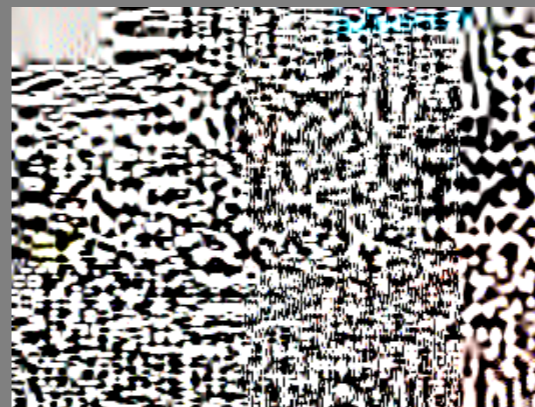
“ ”

6W “ ”

“ ”

27

1



6W

“

; bF<- U
”

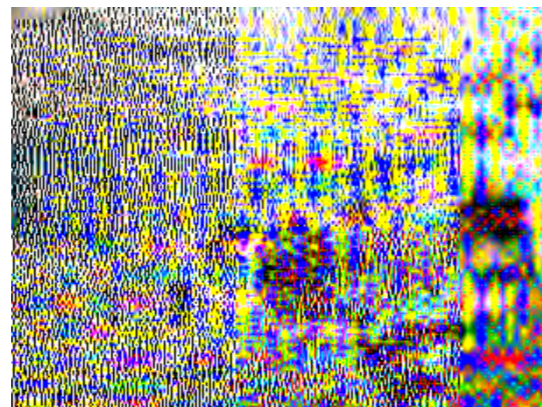
2

9W

8

35

2022 6 30



^{99a}HWDGA5- 137 67 18.5 -
DGA5- 137 198

295%

2020 11

6

2021 4 - 2022 6
^{99a}HWDMD 87

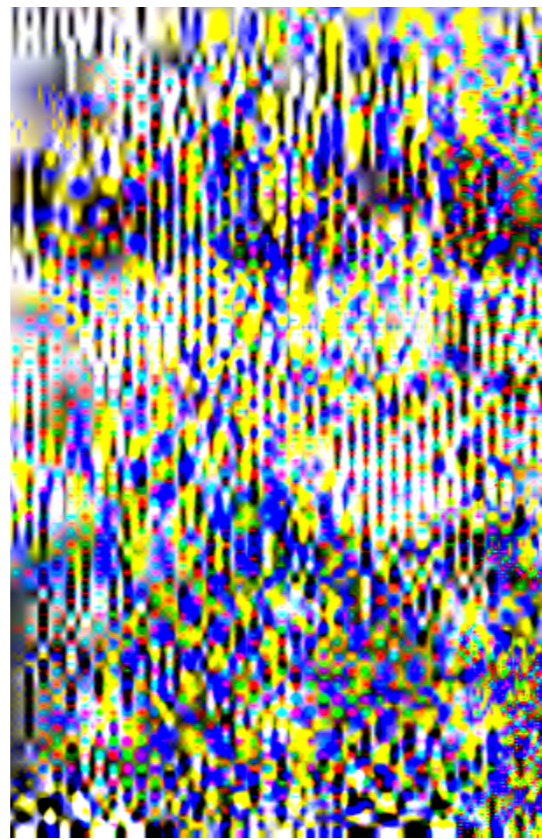
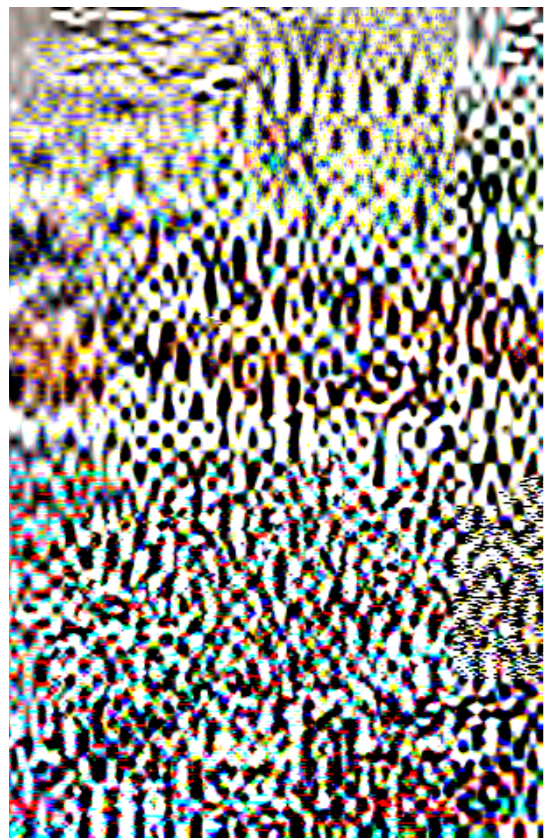
2022 5

“ ”

“ ”

\hhdg: //ad. kY]l] b. ee. Wca/g/
Da5CG<V8; 1<F9@[aA@ A5
2 5 18
“ ”

\hhdg: //ad. kY]l] b. ee. Wca/g/
I 1g=9CFJ=; Y^SgndB467a[



“ ”

“ ”

8F;

7<G 8F;



—

23

6

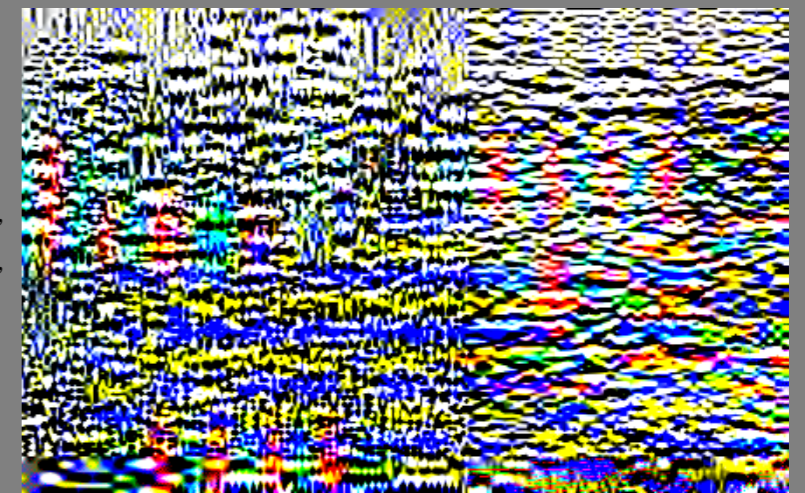
“ ”

“

2022

1

“ ”
“ ”
“ ”
“ ”
“ ”
“ ”
“ ”
“ ”





”



%



—



6 24

“

”

S

b

S

b

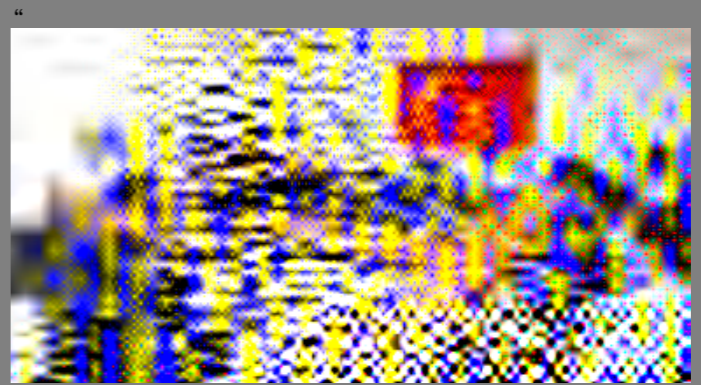
S

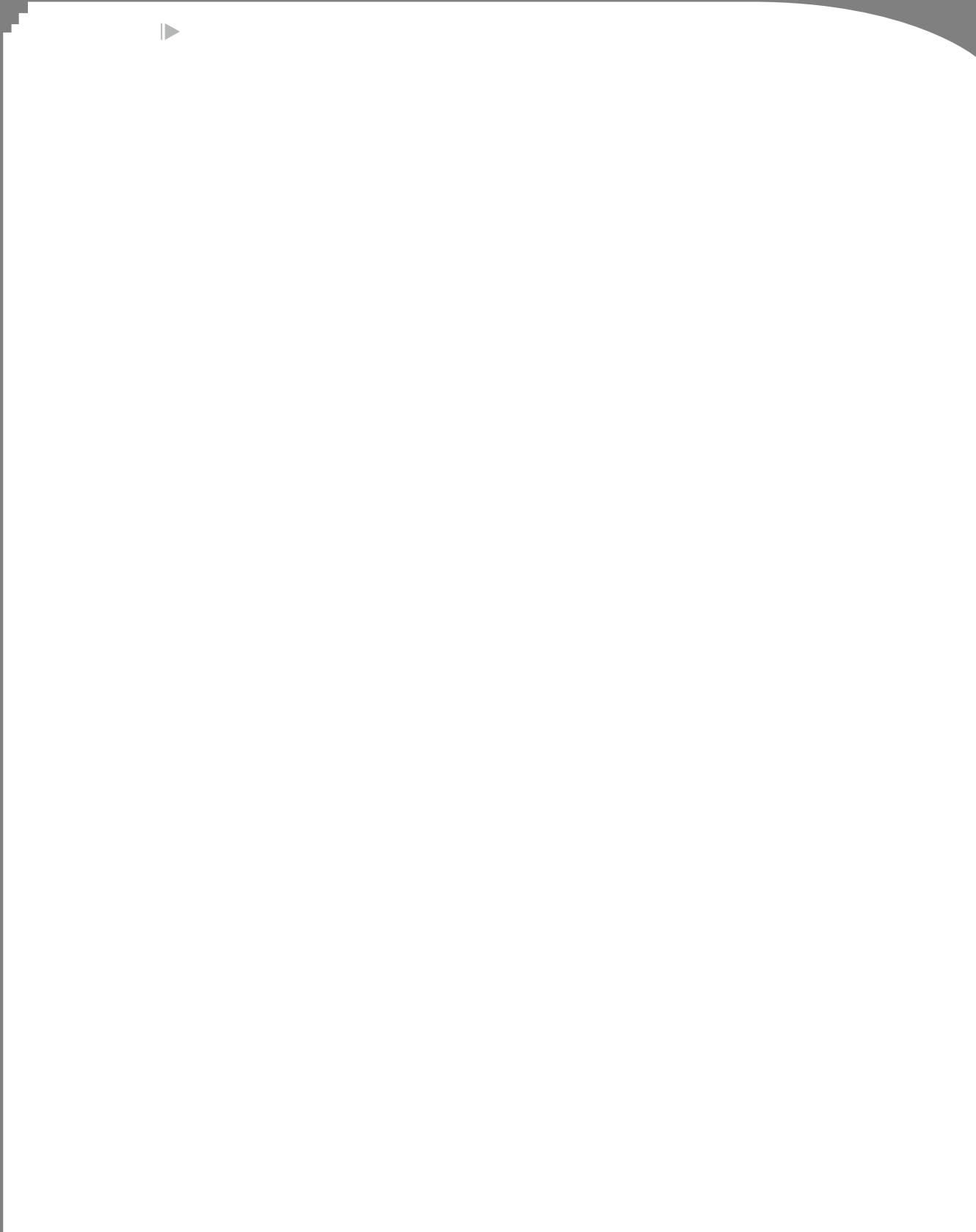
“



b

R









—



“ ”

“ 2022 ”

“ ”

“ ”

6 10

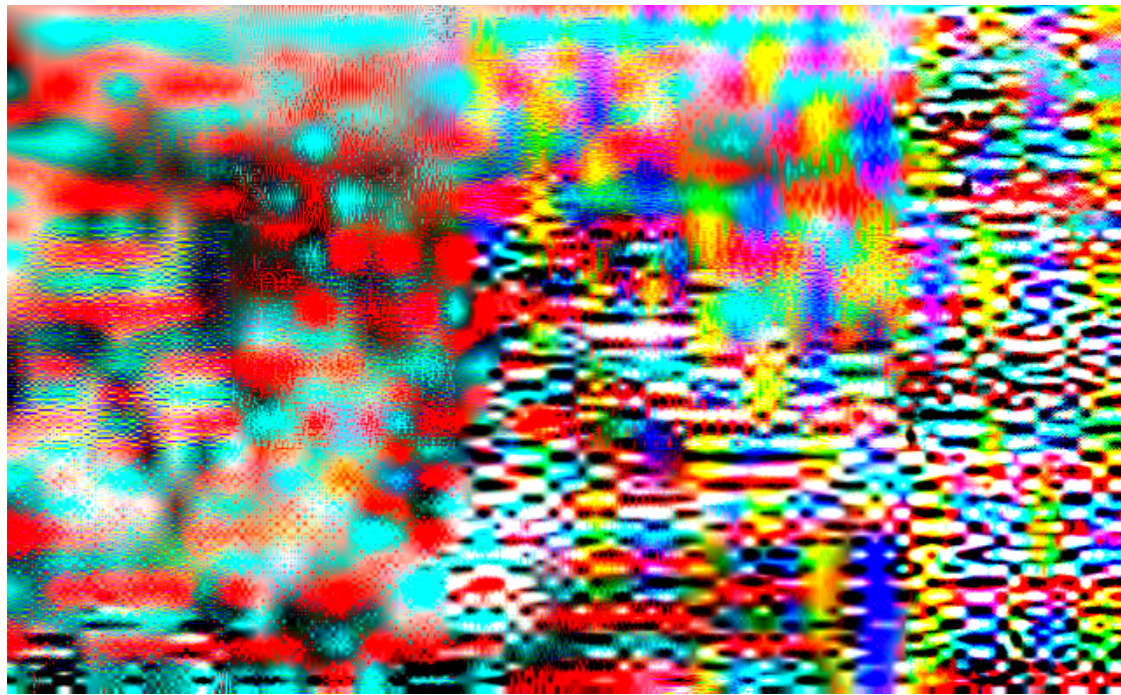
“ ” “ ”

6, 10

“ ”

5

6 20





“ ”